

# SUBWAY 60 SU



- Installation in natural stone or artificial stone countertops
- Minimum width of undersink cabinet: 60 cm
- Possible combinations undercounter see pages 111-112
- Compatible with all soap dispensers on page 93
- Further selection of cover caps for turn lever on page 97



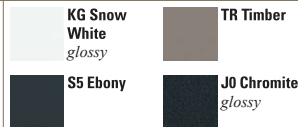
UNDERCOUNTER SINKS

| Ref.       | Description (for XX, please enter colour number)        | € excl. VAT |             |
|------------|---|-------------|-------------|
|            |   | Classicline | Premiumline |
| 3310 01 XX | Undercounter Sink inclusive Waste system, hand-operated | 916,00      | 1.030,00    |
| 3310 02 XX | Undercounter Sink inclusive Waste system, pop-up        | 1.013,00    | 1.127,00    |

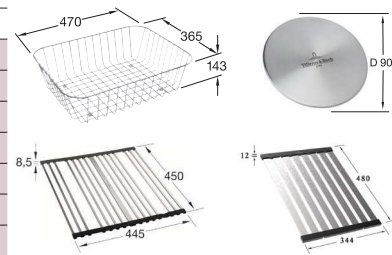
### Classicline CeramicPlus



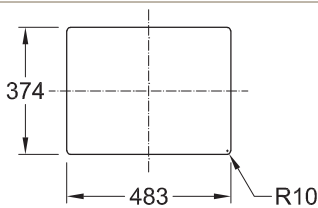
### Premiumline CeramicPlus



| Ref.       | Optional accessories / spare parts                           | € excl. VAT |
|------------|--|-------------|
| 8397 00 K1 | Salad basket, stainless steel                                | 145,-       |
| 9K08 00 K1 | Rolling mat, stainless steel                                 | 118,-       |
| 9624 15 LC | Cap waste cover, stainless steel                             | 37,-        |
| 9K13 00 LC | Folding draining rack, you will find more colours on page 96 | 132,-       |
| 8276 00 61 | Waste system hand-operated, chrome                           | 68,-        |
| 8286 10 00 | Waste system pop-up without Cover cap                        | 165,-       |
| 9218 03 00 | Fastening set  | 41,-        |

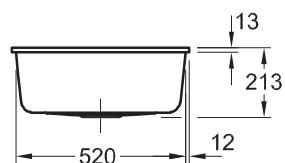
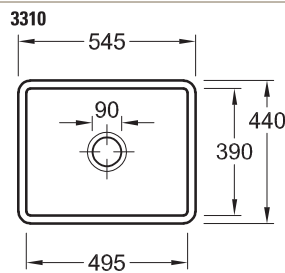


### Required size of worktop



Required size of worktop :  
see attached template  
(Ref. 9307 G9 A9)

### Engineering data



Please refer to the assembly instructions

All dimensions in mm